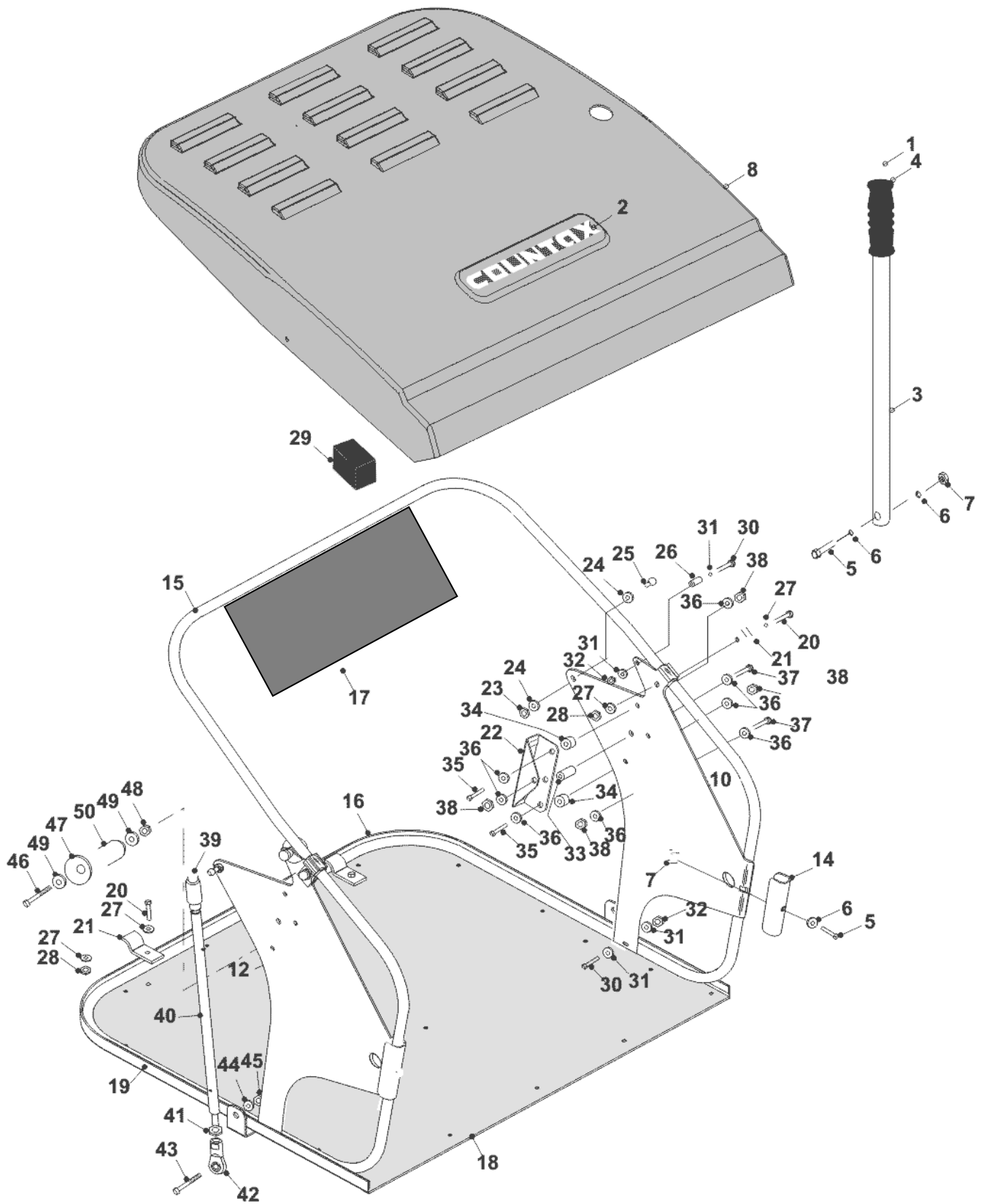


# C Series – Net Assembly 2000 to 2008



1	14880500	BAG TIPPING HANDLE PLUG
2	32932500	OBSOLETE
3	48402800	TIPPING HANDLE
4	38936500	FOAM GRIP
5	028007000	NEW PART NO: 019478900 M6X35MM BOLT
6	088003000	NEW PART NO: 08874300 ¼ T4 HP WASHER
7	049381900	M6 X 3MM - CAPTIVE NUT
8	148006200	NET LID PLASTIC
10	307187200	C SERIES SWEEPER NET R/H SIDE PLATE
12	307187300	C SERIES SWEEPER NET L/H SIDE PLATE
14	30149600	PGC BAG FRAME CLAMPING PLATE
15	174006800	MK2 SWEEPER UPPER BAG FRAME
16	174006900	MK2 SWEEPER LOWER BAG FRAME
17	389471901	C SERIES PGC COLLECTOR NET
18	301058300	SWEEPER GALVANISED FLOOR
19	307026400	OBSOLETE
21	301008400	BAG FLOOR CLAMP
22	307177300	TIPPING HANDLE CHANNEL SWEEPER
23	4886100	OBSOLETE
24	183025600	SWEEPER BALL SPACER
25	183010300	Q.R. BALL END SHAFT
26	18321000	RIDER DECK HANGING BRACKET PIVOT - FRONT
29	148009300	PLASTIC LID SPACER BLOCK
30	01901000	NEW PART NO: 02901000 M6X40M SCREW
31	088000300	NEW PART NO: 08874300 ¼ T4 HP WASHER
32	04920500	NUT M6 NYLOC
33	31330800	SPACER - (HE C-SERIES SEAT SPRING)
34	183024001	NEW PART NO: 31330800 SPACER - (HE C-SERIES SEAT SPRING)
35	01935700	M8 X 35MM - BOLT COMPRESSOR
36	088000200	NEW PART NO: 08819800 WASHER
37	018000300	BOLT - M6 X 20MM
38	04822300	FULL NUT HEAX M8 Z/P
39	183024900	QUICK RELEASE BALL JOINT
40	183010400	301122900 NEW PART NO: 183010402 ADJUSTER LINK ROD
41	04872100	M10 LOCKNUT
42	10872600	10MM ROD END
43	028002300	M10 X 25 S/SCREW BZP
44	088002400	WASHER - 10.8ID X 20.7OD X 2MM THK
45	068000400	NEW PART NO: 04872100 M10 LOCKNUT

46	028662600	BOLT M8 X 55
47	307029900	C SERIES SWEEPERDOMED WASHER
48	04920100	M8 NYLOC NUT
49	08819500	WASHER 5/16 T3 LP ZINC PLATED
50	183023900	BOSS BAG FRAME PIVOT